

SET TO BREAK THE MOLD. AGAIN.



An aerial photograph of two people swimming in clear, turquoise water. The water is so clear that the sandy bottom and some rocks are visible. The two people are swimming towards the bottom left of the frame. The person in front is wearing a white bikini, and the person behind is wearing a blue bikini. The overall scene is bright and serene.

# EXUMA

FULLY FISH, DIVE,  
CRUISE, AND EXTENDED  
STAY CAPABLE

# EXUMA

The Exuma yacht is designed to provide your family and friends with the ability to fish, dive, and explore, everything the islands have to offer. The Exuma will take you there in the world's most versatile and luxuriously appointed yacht built today.



EXUMA S5 >



EXUMA SF5 >



EXUMA HTC5 >



EXUMA HTF5 >



EXUMA HTC5p >



**HTC5p**

**2024**





5 EXUMA HTC5p



6 EXUMA HTC5p



7 EXUMA HTC5p





8 EXUMA HTC5p









1 | EXUMA HTC5p





13 EXUMA HTC5p







15 EXUMA HTC5p

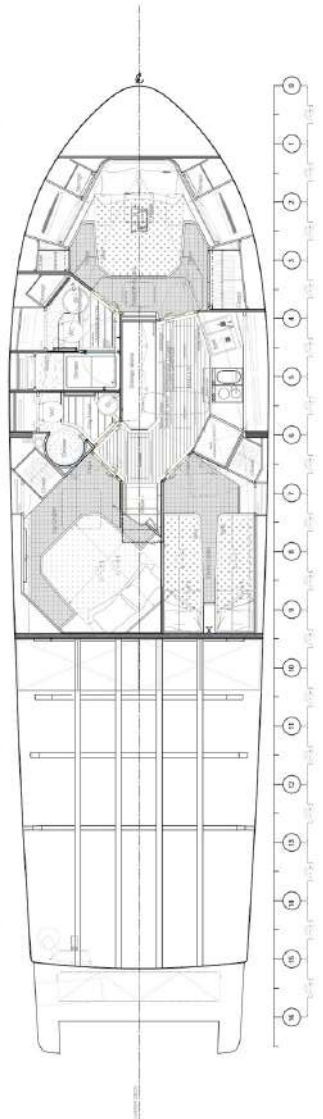
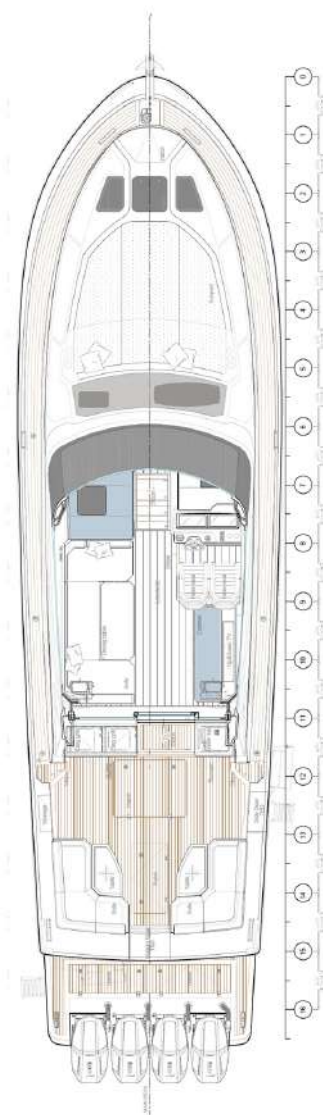
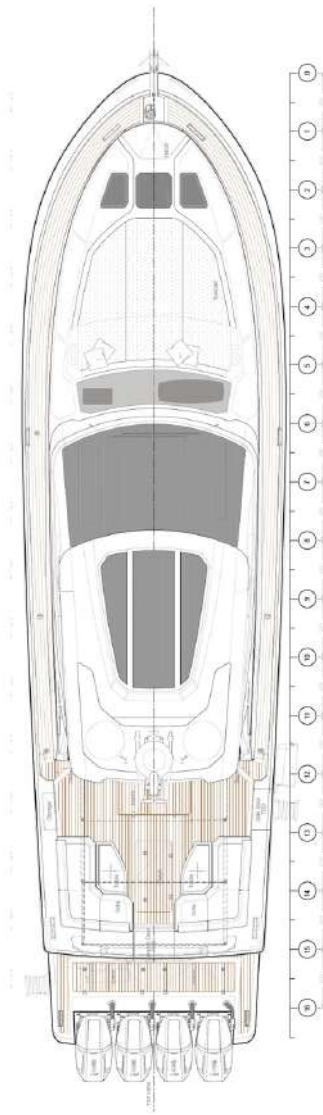
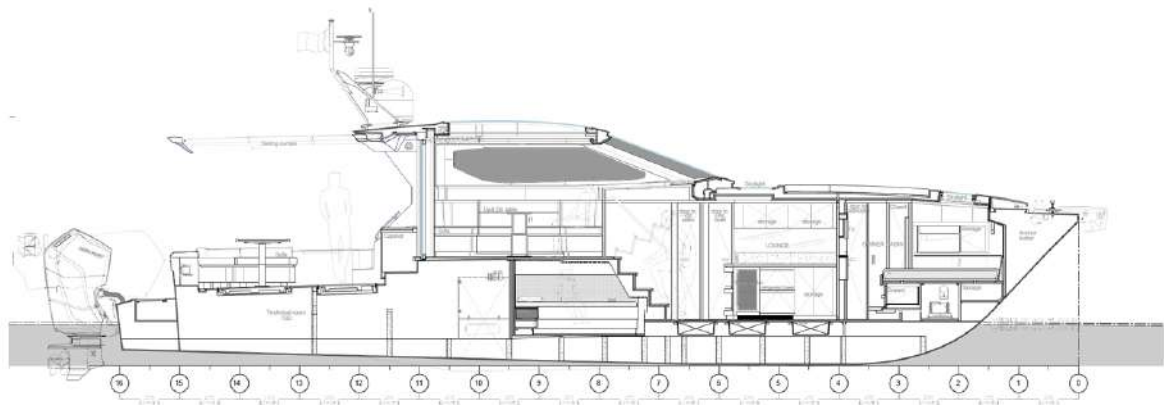














## SPECIFICATIONS

### PRINCIPAL SPECIFICATIONS

Length overall	16.66 m / 54' 8" ft
Beam – (maximum)	4.62 m / 15' 2" ft
Depth under propellers	1,097 m / 3' 6" ft
Full load displacement approx.	19,958 kg / 44,000 lbs
Light displacement	16,329 kg / 36,000 lbs
Persons	14
Beds	6
RINA Class	A

### FUEL . WATER . ENGINE

Fuel tank capacity	3028 litri / 800 US gals
Generator diesel tank	284 litri / 75 US gals
Fresh water tank	1000 litri / 264 US gals
Grey water tank	185 litri / 49 US gals
Black water tank	125 litri / 33 US gals
Standard engines	Triple Mercury Verado V12 600 hp
Optional engines	Quad Mercury Verado V12 600 hp
MAX speed	43 – 53 knots

\* with optional quad Mercury package



**uniesse**

WWW.UNIESE.COM +1 (888) 504-5523