

SET TO BREAK THE MOLD. AGAIN.



An aerial photograph of two people swimming in clear, turquoise water. The water is so clear that the sandy bottom and some rocks are visible. The two swimmers are positioned in the lower-left quadrant of the frame, swimming towards the right. The overall scene is bright and serene, with a strong emphasis on the color of the water.

EXUMA

FULLY FISH, DIVE,
CRUISE, AND EXTENDED
STAY CAPABLE

EXUMA

The Exuma yacht is designed to provide your family and friends with the ability to fish, dive, and explore, everything the islands have to offer. The Exuma will take you there in the world's most versatile and luxuriously appointed yacht built today.



EXUMA S5 >



EXUMA SF5 >



EXUMA HTC5 >



EXUMA HTF5 >



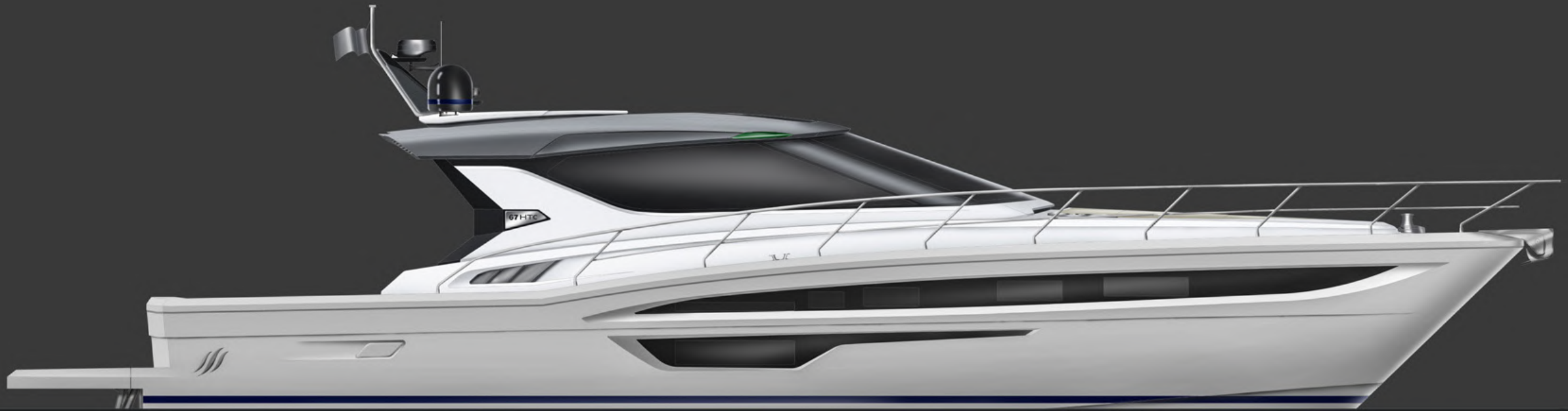
EXUMA HTC6 >



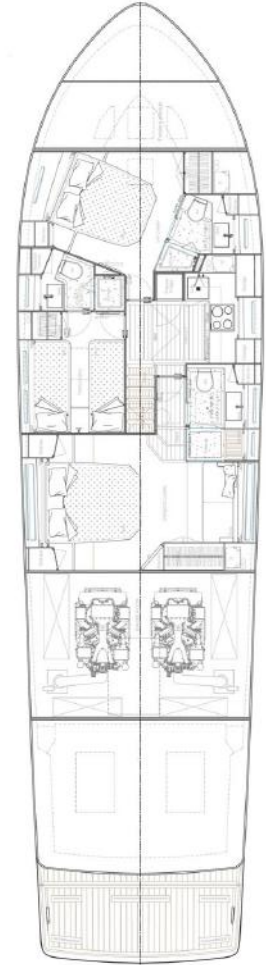
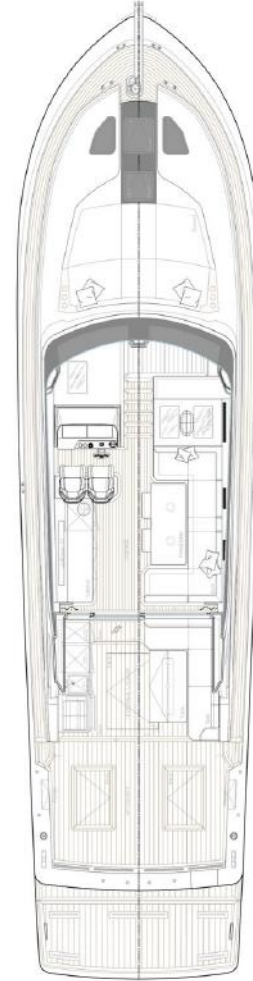
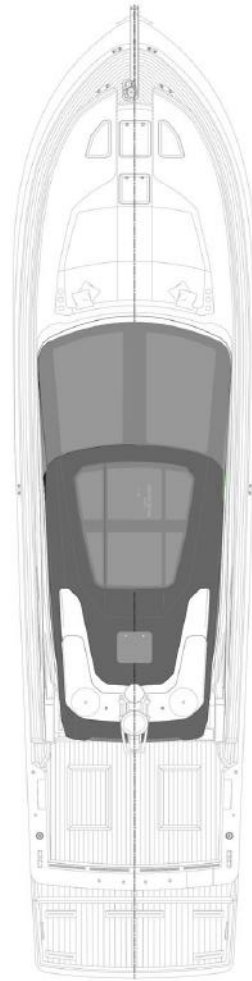
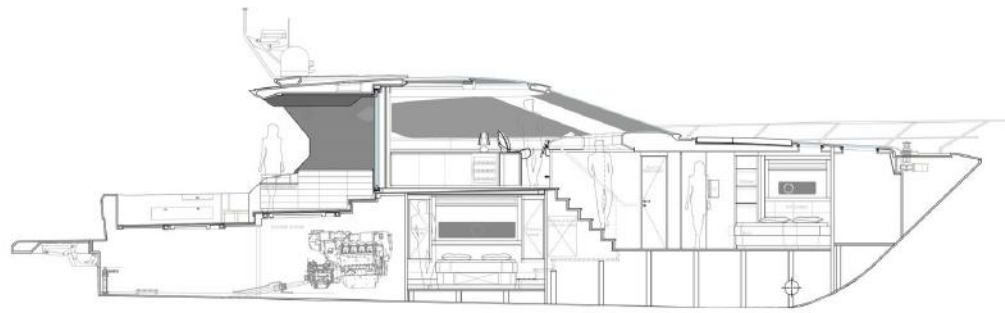
EXUMA HTC7 >



HTC7



EXUMA HTC7





SPECIFICATIONS

PRINCIPAL SPECIFICATIONS

Length overall	20.42 m / 67' 0" ft
Beam – (maximum)	5.18 m / 17' 0" ft
Depth under propellers	TBA
Full load displacement	TBA
Light displacement	TBA
Persons	18
Beds	6/8
CE Omologation	TBA

FUEL . WATER . ENGINE

Fuel tank capacity	TBA
Fresh water tank	TBA
Gery water tank	TBA
Black water tank	TBA
Standard engines	TBA
Optional engines	TBA
Optional engines	TBA
Optional engines	TBA
Optional engines	TBA
Optional engines	TBA
MAX power	TBA
MAX speed	TBA



uniesse

WWW.UNIESE.COM +1 (305) 740-5199