

SET TO BREAK THE MOLD. AGAIN.



An aerial photograph of two people swimming in clear, turquoise water. The water is so clear that the sandy bottom and some rocks are visible. The two people are swimming towards the bottom left of the frame. The person in front is wearing a light-colored bikini, and the person behind is wearing a dark blue bikini. The overall scene is bright and serene.

EXUMA

FULLY FISH, DIVE,
CRUISE, AND EXTENDED
STAY CAPABLE

EXUMA

The Exuma yacht is designed to provide your family and friends with the ability to fish, dive, and explore, everything the islands have to offer. The Exuma will take you there in the world's most versatile and luxuriously appointed yacht built today.



EXUMA S5



EXUMA S5P



EXUMA HTC5



EXUMA HTC5P



HTC5p

2024





5 EXUMA HTC5p



6 EXUMA HTC5p



7 EXUMA HTC5p





8 EXUMA HTC5p







111 EXUMA HTC5p



12 EXUMA HTC5p



13 EXUMA HTC5p







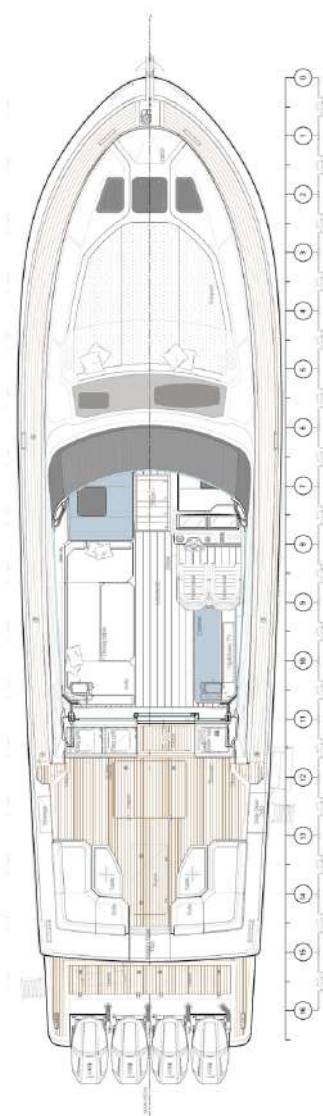
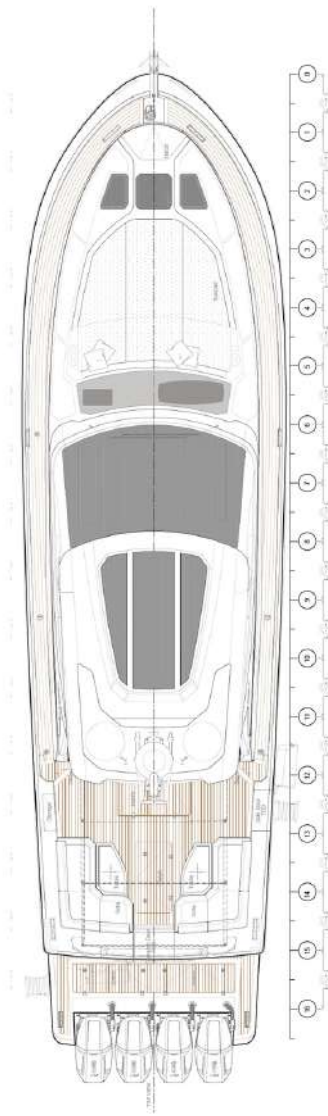
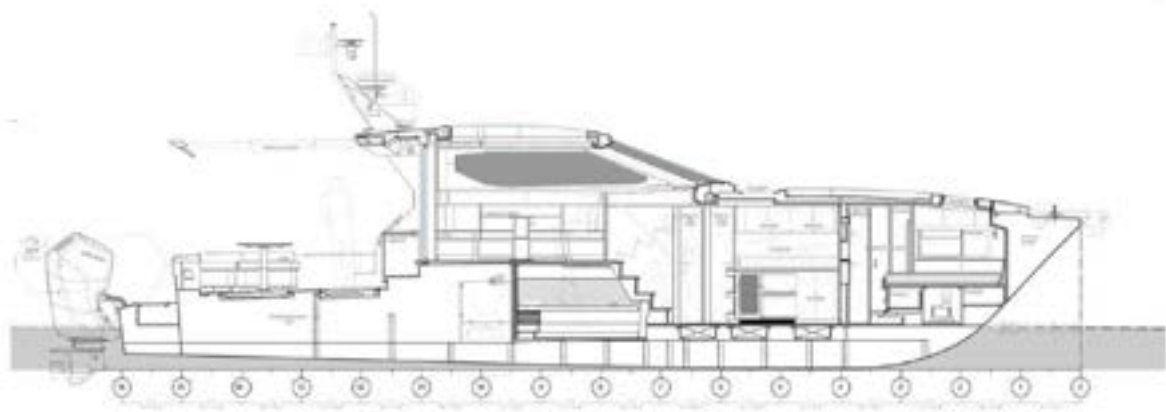
15 EXUMA HTC5p













SPECIFICATIONS

PRINCIPAL SPECIFICATIONS

| | |
|--------------------------------|------------------------|
| Length overall | 17.31 m / 56' 8" ft |
| Beam – (maximum) | 4.62 m / 15' 2" ft |
| Depth under propellers | 1,097 m / 3' 6" ft |
| Full load displacement approx. | 19,958 kg / 44,000 lbs |
| Light displacement | 16,329 kg / 36,000 lbs |
| Persons | 14 |
| Beds | 6 |
| RINA Class | A |

FUEL . WATER . ENGINE

| | |
|-----------------------|---|
| Fuel tank capacity | 3,305 litri / 873 US gals |
| Generator diesel tank | 284 litri / 75 US gals |
| Fresh water tank | 1000 litri / 264 US gals |
| Grey water tank | 185 litri / 49 US gals |
| Black water tank | 125 litri / 33 US gals |
| Standard engines | Triple Mercury Verado V12 600 hp |
| Optional engines | Quad Mercury Verado V12 600 hp |
| MAX speed | 43 – 52 knots * with optional quad Mercury package |



uniesse

WWW.UNIESE.COM 1+ (888) 504-5523